

These safety devices, which are essential to preserve the accumulator from phenomena of over-pressure, are provided of a valve of maximum pressure settled in the factory at different values and of a discharge valve which is available in manual and electric version or manual only.

Technical Features:

Maximum working pressure: 350 bar

Body: in zinc-coated forged steel

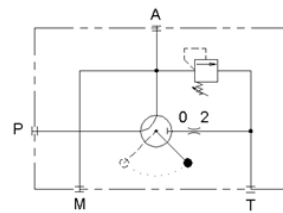
Standard execution:

- Isolation ball valve
- Safety relief valve
- Drain port
- Gauge port
- Electric solenoid valve for accumulator discharge

Working temperature: from -20°C to +80°C

Special execution:

- Safety valve /TÜV test inspected
- SAE flange or CETOP connecting for SB5 and SB6 type



Type	Execution	FOX Recommended Accumulators	Hydraulic Connection Accumulator's side	Hydraulic Connection Installation's side	Hole diameter for fluid	Flow rate	Version	Pressure setting for safety valve
SB3	Manual	Sizes from 10L to 50L	2" BSPM	1/2" BSPF	10 mm	55 l/min at ~10 m/s	Execution with manual command or manual and electric. Standard execution electrovalve NO, 24V. Other execution on request.	Indicate the pressure value for safety valve in Bar